



FEEL THE DIFFERENCE

MEETING & EVENTS

IN HASSELT

MEETING PACKAGES

RADISSON
MEETINGS



14

MEETING ROOMS

LARGEST BUSINESS HOTELS IN HASSELT—LIMBURG

280

MAXIMUM MEETING CAPACITY

ALTERNATIVE OPTIONS CAN BE DISCUSSED

126

HOTEL ROOMS

RADISSON BLU HOTEL, HASSELT

STANDARD | SUPERIOR | EXECUTIVE | SUITES



94

HOTEL ROOMS
PARK INN BY RADISSON HASSELT
STANDARD | SUPERIOR | JUNIOR SUITES

**INTERNALLY CONNECTED WITH THE
RADISSON BLU HOTEL, HASSELT AND ITS
MEETING ROOMS**

**HOTEL ENTRANCE RIGHT NEXT
TO MEETING ROOMS 'JENEVERZALEN'**



STANDARD ROOMS
TWIN BEDS | QUEEN BEDS



SUPERIOR | EXECUTIVE ROOMS
HIGHER FLOOR | MORE AMENITIES | KING BEDS



SUITES
BEST CITY VIEW | VIP AMENITIES | LIVING AREA | LATE CHECK-OUT



STANDARD ROOMS
TWIN BEDS | QUEEN BEDS



SUPERIOR ROOMS
HIGHER FLOOR | MORE AMENITIES | QUEEN BEDS



JUNIOR SUITES
BIGGER ROOMS | KITCHENETTE | UP TO 3 GUESTS

MEETING PACKAGES

EXCLUDING MEETING ROOM RENTAL

SMART PACKAGE

MEETING ROOMS APPLICABLE: THE ART ROOMS | JENEVERZALEN

- Water | Coffee | Tea (In meeting room)
- Sandwich lunch | Soft drinks

PRICE PER PERSON | PER MEETING DAY: €28,00



FEEL THE DIFFERENCE PACKAGE

MEETING ROOMS APPLICABLE: THE ART ROOMS | JENEVERZALEN

- Water | Coffee | Tea (In meeting room)
- Morning break
- Sandwich lunch | Soup | Salad selection | Soft drinks
- Afternoon break
- 10% discount in our Bistro Green House | Dinner only

PRICE PER PERSON | PER MEETING DAY: €58,00



SKY 'BLU' PACKAGE

MEETING ROOMS APPLICABLE: **SKY MEETING** | THE ART ROOMS | JENEVERZALEN

- Water | Coffee | Tea (In meeting room)
- Morning break in **Sky Foyer**
- Sandwich lunch | Soup | Salad selection | Pasta | Soft drinks
- Afternoon break in **Sky Foyer**
- One surprise mocktail in **Bon'Air Rooftop Bar**
Starting from 5 PM | Closed on Sundays
- 10% discount in our Bistro Green House | Dinner only

PRICE PER PERSON | PER MEETING DAY: €68,00



MEETING ROOM RENTAL

THE ART ROOMS | THEMED ON BELGIAN PAINTERS

1st FLOOR

STARTING FROM €300,00 | PER MEETING ROOM | PER DAY:

- Rubens
 - Magritte
 - Raveel
 - Van Eyck
-

JENEVERZALEN | NAMED AFTER LOCAL JENEVER

2nd FLOOR

STARTING FROM €400,00 | PER MEETING ROOM | PER DAY:

- Smeets
 - Fryns
 - Wissels
 - Noblesse
-

SKY MEETING | WITH THE BEST VIEW OVER THE CITY

17th & 18th FLOOR

STARTING FROM €500,00 | PER MEETING ROOM | PER DAY:

- Sky Meeting 1
- Sky Meeting 2
- Sky Meeting 3 - The Board Room
- Sky Meeting 4
- Sky Meeting 5
- Sky Meeting 6

STANDARD FACILITIES MEETING ROOMS

High speed WiFi

1x Beamer

1x Projection screen

1x Flipchart

1x Clickshare or HDMI cable

1x Clicker with laser pointer

1x Inventory tool box (post its, stapler, etc.)

POSSIBLE SUPPLEMENTS

Wireless Microphone	€100,00
Splitter	€30,00
Converter VGA - HDMI	€50,00
Converter VGA - New HDMI	€50,00
Converter HDMI - Mini USB	€50,00
Converter VGA - Mini USB	€50,00
Hyperdrive PRO hub USB-C Macbook Pro	€100,00
Extra clicker with laser pointer	€50,00
Extra Flipchart	€25,00
Dance Floor	€500,00
Built-up stage	€250,00
DJ at your event	€850,00
Change of meeting set-up	€100,00





Green
HOUSE
BISTRO

THREE COURSE MENU €48,00

This is an example menu, feel free to ask for the
seasonal menu

Appetizer | Main course | Dessert

Flemish asparagus soup
Cheese Croquettes | tartare sauce
Fried prawns | tomato twist

Veal escalope | asparagus | veal gravy | baby potatoes
Sea bass fillet | beans | lobster sauce | mashed potatoes
Vegetarian Burger

Chocolate mousse | Belgian way
Caramel fantasy
Lemon tart

DRINK PACKAGE 1: €17,50 p.p.

water, soft drinks, coffee, tea

DRINK PACKAGE 2: €29,50 p.p.

water, soft drinks, white/red wine, beer from tap, coffee, tea

DRINK PACKAGE 3:

per consumption, up to 10 guests maximum

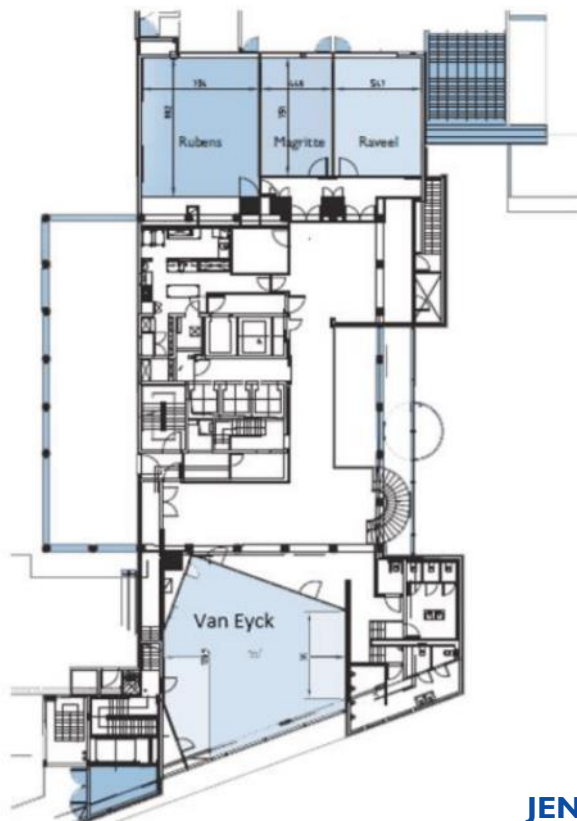
10% discount in our Bistro Green House | Dinner only

Applicable when FEEL THE DIFFERENCE PACKAGE or SKY 'BLU' PACKAGE are booked

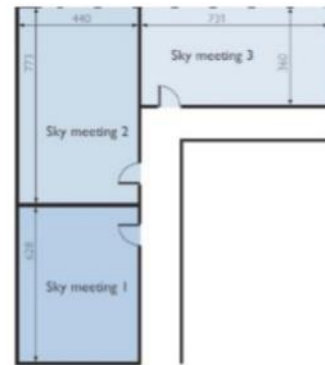


3ON'AIR
ROOFTOP BAR

THE ART ROOMS



SKY MEETING



SKY MEETING



JENEVERZALEN



ROOMS	BOARD-ROOM	THEATER	CLASSROOM	U-SHAPE	CABARET	DINNER	CEILING HEIGHT	SQM
Rubens	32	50	36	20	30	40	3,20	61,5
Magritte	14	20	18	10	12	40	3,20	33
Raveel	14	25	26	10	18	40	3,20	40,5
Van Eyck	30	100	65	32	42	60	3,90	111
Foyer								77
SKY 1	12	20	12	10	10		2,64	20,5
SKY 2	14	30	18	14	15		2,64	31
SKY 3	10						2,64	25,5
SKY 4	14	35	24	16	15	20	2,64	36
SKY 5	14	35	24	12	15	20	2,64	36
SKY 6	20	50	30	24	25	40	2,64	57,5
Bon'Air Rooftop Bar + Terrace								120+80
Smeets	14	40	20	16	18	30	3,20	47
Fryns	14	40	36	20	24	40	2,90	56,5
Wissels	14	50	30	20	30	48	2,90	58
Noblesse	20	65	50	24	36	65	2,95	83
Jeneverzaal	62	225	120	80	105	182	3,20	244,5



LOCATION

BY CAR

Easy to reach from Hasselt-Zuid highway (5-minute drive)

BY TRAIN

Hasselt Central Station - 1 km (12-minute walk)

BY PLANE

Brussels Zaventem Airport - 78 km (1h drive)

Brussels Charleroi Airport - 95 km (1h20 minutes drive)

Liège Airport - 48 km (35-minute drive)

Maastricht Airport - 46 km (40-minute drive)

EXTERNAL PARKING*

Underground parking TT-wijk (Q-Park) with direct access to the hotel.

More information: [Parking Tweek Torens | Hasselt \(q-park.be\)](https://www.q-park.be)

*All services of Q-Park are not related to our hotels.

Providing you with an invoice is not possible.



Radisson Blu Hotel, Hasselt
Torenplein 8, 3500 Hasselt, Belgium

Park Inn by Radisson Hasselt
Sint-Jozefsstraat 10/2.2, 3500 Hasselt, Belgium

Meeting & Events team:
meetings.hasselt@radissonblu.com

Meeting & Events team:
meetings.hasselt@radissonblu.com

Hotel reception: info.hasselt@radissonblu.com
Telephone: +32 11 77 00 00

Hotel reception: info.hasselt@parkinn.com
Telephone: +32 11 71 88 80

