

---

# MEETINGS BROCHURE 2025

---

# CREATING A PROFESSIONAL, PERSONAL AND MEMORABLE EXPERIENCE

**Welcome to Radisson Blu Hotel, Hasselt  
& Park Inn by Radisson Hasselt**

We understand that, whatever the occasion, the stakes are high. So, you want the best experience for your attendees. When we work together, you can rest assured that your event is in good hands. Our Radisson Meetings concept and the solutions we design for you always keep the three pillars of a successful event at their core: professional, personal and memorable.

**RADISSON**  
MEETINGS

# THE TWO TOWERS

---

The term in Hasselt for the Radisson Blu Hotel, Hasselt and Park Inn by Radisson Hasselt, and for years the reference point for a quality stay in the city and its surroundings. At Radisson Hasselt, we strive to not only make our guests' stay as pleasant as possible, but also as memorable as possible.

The two hotels in Hasselt are located next to each other and have an internal passageway. It is therefore very easy to access one hotel via the other. Combined, the Radisson Blu Hotel and Park Inn by Radisson feature 220 hotel rooms and 14 meeting rooms.

In addition, hotel guests can also use the underground parking located underneath the hotels, Bistro Greenhouse and the Bon'Air Rooftop bar.

Thanks to its central location, right next to the E313 highway, Hasselt is the perfect base for your team. The major Belgian cities of Brussels, Antwerp and Liège are all less than an hour's drive away. Popular venues in Hasselt, like Europe's largest Japanese garden, the Trixxo Arena and the Herkenrode abbey are also within easy reach.

In this brochure you will find more information about our hotels and their facilities, based on the specific needs for meetings and seminars.

Hope to see you soon in Hasselt!







# RADISSON BLU HASSELT

*Feel the difference*



**126** GUEST  
ROOMS



**14** MEETING  
ROOMS



**225** MAX  
CAPACITY  
SEATED



Healthy food  
options



Multiple  
Dinner and  
Lunch Options



Secure  
storage



24-Hour Gym  
Access



On-site  
Parking



Polyvalent  
Meeting Rooms



Audio Visual  
Equipment



Personal  
approach





# PARK INN BY RADISSON HASSELT

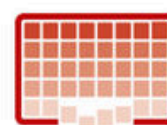
*Feel good*



**94** GUEST  
ROOMS



**14** MEETING  
ROOMS



**225** MAX  
CAPACITY  
SEATED



Healthy food  
options



Multiple  
Dinner and  
Lunch Options



Secure  
storage



24-Hour Gym  
Access



On-site  
Parking



Polyvalent  
Meeting Rooms



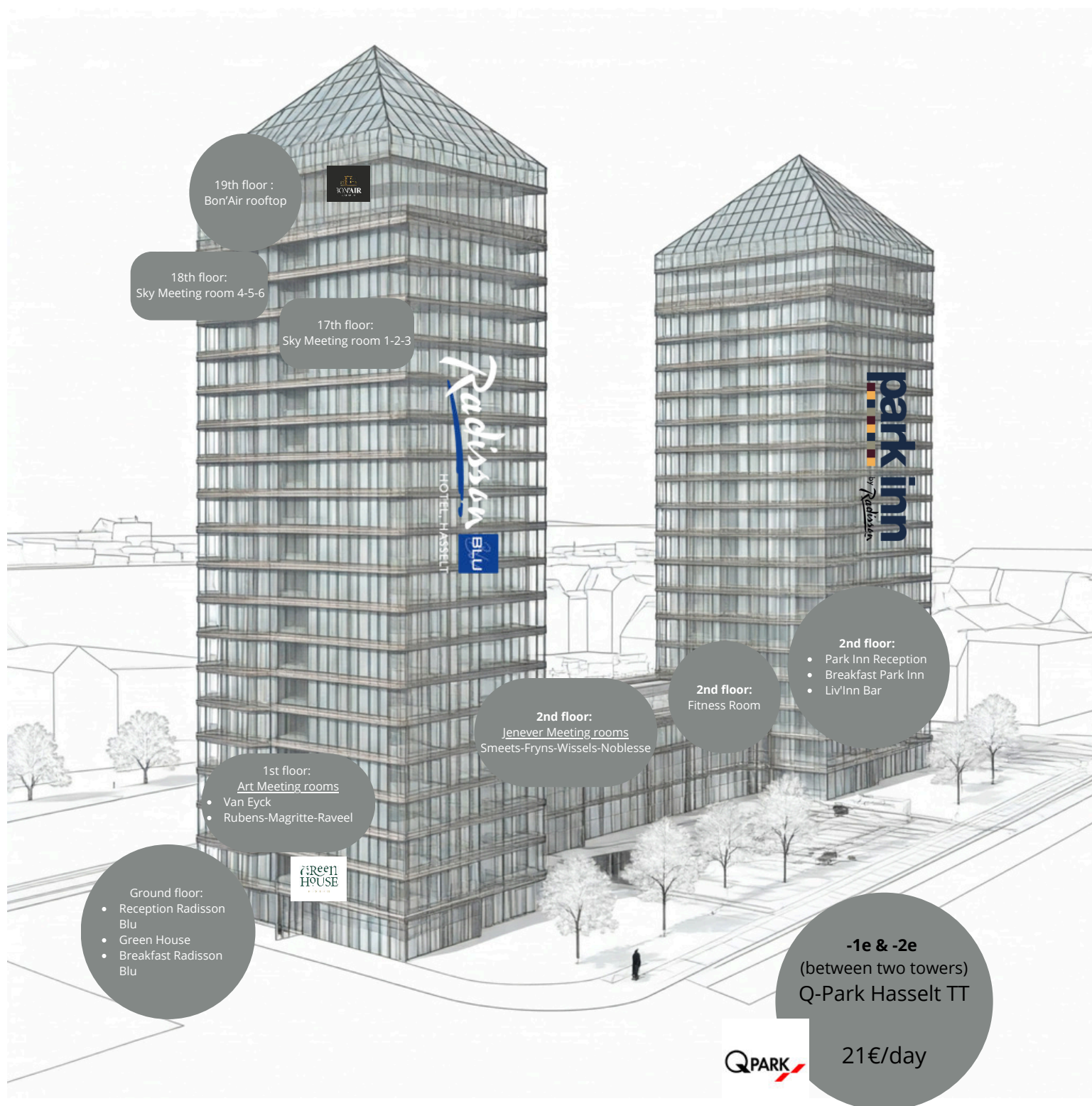
Audio Visual  
Equipment



Personal  
approach



## MEETING & EVENT ROOMS - TWO TOWERS





# RADISSON MEETINGS





# MEETING PACKAGES

---

## SMART PACKAGE:

- Water | Coffee | Tea (In meeting room)
- Sandwich lunch | Soft drinks (only for full day package)

**PRICE PER PERSON PER FULL DAY: €34.50 (room rental not included)**

## FEEL THE DIFFERENCE PACKAGE:

- Water | Coffee | Tea (In meeting room)
- Morning Coffee break
- Sandwich lunch | Soup | Salad bar | Soft drinks
- Afternoon Coffee break
- 10% discount in our Bistro Green House | Dinner only

**PRICE PER PERSON PER FULL DAY: € 78.50 (room rental not included)**

**PRICE PER PERSON PER HALF DAY: € 64.00 (room rental not included)**

## SKY HIGH PACKAGE:

- Water | Coffee | Tea (In meeting room)
- Morning Coffee break
- Sandwich lunch | Soup | Salad bar | Hot Dish Selection | Soft drinks
- Afternoon Coffee break
- Surprise Mocktail in our **Bon'Air Rooftop Bar**
- 10% discount in our Bistro Green House | Dinner only

**PRICE PER PERSON PER FULL DAY: €88.40 (room rental not included)**

**PRICE PER PERSON PER HALF DAY: €73,90 (room rental not included)**



# MEETING ROOMS

---

## ART ROOMS | 1st floor:

Themed on Belgian Painters

- Rubens
- Magritte
- Raveel
- Van Eyck

**PRICE PER MEETING ROOM : STARTING AT €190**

Room rental rates depend on room and request room set up

## JENEVER ROOMS | 2nd floor:

Themed on the traditional Hasselt Liquor

- Smeets
- Fryns
- Wissels
- Noblesse

**PRICE PER MEETING ROOM : STARTING AT €190.00**

Room rental rates depend on room and request room set up

## SKY ROOMS | 17th and 18th floor:

Meet in style with a breathtaking view over the city and the surrounding area

- Sky 1
- Sky 2
- Sky 3 - Board Room
- Sky 4
- Sky 5
- Sky 6

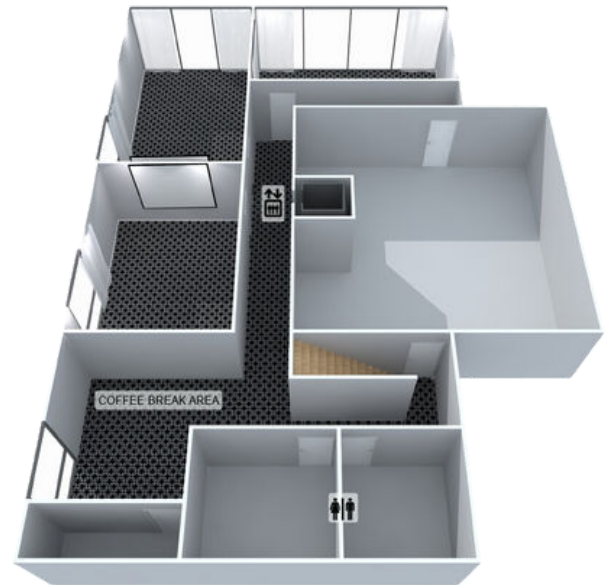
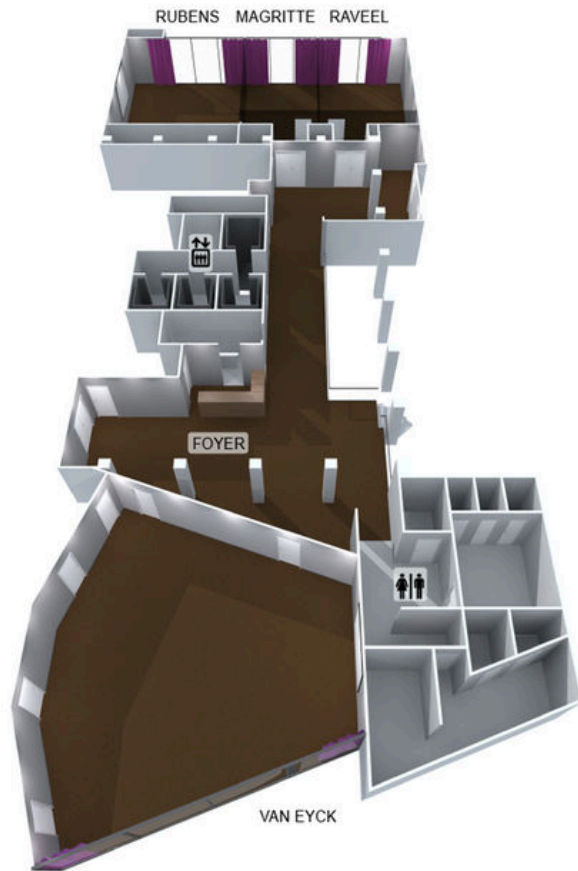
**PRICE PER MEETING ROOM : STARTING AT €190.00**

Room rental rates depend on room and request room set up



## SKY MEETING ROOMS 17th

### THE ART ROOMS 1st floor



## SKY MEETING ROOMS 18th floor



### JENEVER ROOMS 2nd floor



**Contact our Meetings & Events team to see what meeting room is best equipped to fill your needs.**



# MEETING ROOM FACILITIES

---

High speed WiFi

1x Beamer

1x Projection screen

1x Clickshare or HDMI cable

1x Clicker with laser pointer

1x Inventory tool box

1x Flipchart

## POSSIBLE SUPPLEMENTS

Wireless Microphone & speaker	€100,00
Splitter	€30,00
Converter VGA - HDMI	€50,00
Converter VGA - New HDMI	€50,00
Converter HDMI - Mini USB	€50,00
Converter VGA - Mini USB	€50,00
Extra clicker with laser pointer	€50,00
Extra Flipchart	€25,00
Built-up stage	€250,00
Last-minute change of meeting set-up	€100,00





**Art Rooms**



**Sky Rooms**



**Jenever Rooms**





GREEN  
HOUSE  
BISTRO



# DINNER OPTIONS

---

## 2 Course menu:

- 2 course menu from the chef
- Starter and main course or main course and dessert
- Beverage package including soft drinks, coffee/tea, house wines and draft beers

**PRICE PER PERSON: €47.00**

**BEVERAGE PACKAGE PER PERSON: €25.00**

## 3 Course menu:

- 3 course menu from the chef
- Starter, main course and dessert
- Beverage package including soft drinks, coffee/tea, house wines and draft beers

**PRICE PER PERSON: €60.00**

**BEVERAGE PACKAGE PER PERSON: €25.00**

## Grill Buffet:

- Buffet with meat and fish options, salad bar and potato dishes
- Dessert buffet included
- Beverage package including soft drinks, coffee/tea, house wines and draft beers

**PRICE PER PERSON: €59.00**

**BEVERAGE PACKAGE PER PERSON: €25.00**

## Pasta Buffet:

- Buffet with three kinds of pasta dishes, bread and cheese
- Dessert buffet not included
- Beverage package including soft drinks, coffee/tea, house wines and draft beers

**PRICE PER PERSON: €47.00**

**BEVERAGE PACKAGE PER PERSON: €25.00**

**Our kitchen team takes into account all dietary wishes.**



**3ON'AIR**  
ROOFTOP BAR



# LOCATION

---

## BY CAR

Easy to reach from E313 highway (5-minute drive)

### PARKING\*

Underground parking TT-wijk (Q-Park) with direct access to the hotel. More information: Parking Tweek Toren | Hasselt ([q-park.be](http://q-park.be))

\*All services of Q-Park are not related to our hotels.

## BY TRAIN

Hasselt Central Station - 1 km (12-minute walk)

## BY PLANE

Brussels Zaventem Airport - 78 km (1h drive)

Brussels South Charleroi Airport - 95 km (1h20 minutes drive)

Liège Airport - 48 km (35-minute drive)

Maastricht Airport - 46 km (40-minute drive)





# Contact

---

## **Department Meetings & Events**

Our Meeting & Events hosts wish you a warm welcome in Hasselt !

### **Radisson Blu Hotel, Hasselt**

Torenplein 8, 3500 (B) Hasselt

**T:**+(32) 11 77 00 00

**M:**[meetings.hasselt@radissonblu.com](mailto:meetings.hasselt@radissonblu.com)

### **Park Inn by Radisson Hasselt**

Sint-Jozefsstraat 10/2.2, 3500 (B) Hasselt

**T:**+(32) 11 71 88 80

**M:**[meetings.hasselt@radissonblu.com](mailto:meetings.hasselt@radissonblu.com)





**Radisson** **BLU**  
HOTEL, HASSELT

**park inn**  
by **Radisson**  
HASSELT